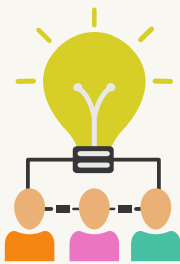




# EMBEDDED SYSTEM ENGINEER



An embedded systems engineer is responsible for designing, developing, and testing embedded systems, which are computer systems integrated into other devices or products.



They work with a team of engineers and scientists to create efficient and cost-effective solutions for various applications such as electric vehicles, consumer electronics, industrial control systems, and other applications.



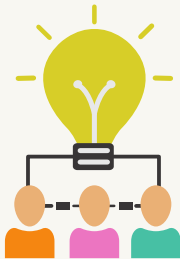
They need to have a strong understanding of electrical engineering, computer science, and software engineering, as well as experience with microcontrollers, embedded operating systems, and programming languages.



# BMS ENGINEER



A Battery Management System (BMS) engineer is responsible for designing, developing, and testing the BMS for batteries.



They work with a team of engineers and scientists to create efficient and safe BMS for electric vehicles, consumer electronics, grid storage, and other applications.



They are responsible for the control and monitoring of the battery's state of charge, state of health and other performance parameters, as well as for the implementation of safety measures and protection of the battery against abuse and malfunction. They need to have a strong understanding of electrical engineering, control systems, and computer science, as well as experience with battery management systems, safety protocols, and regulations. They also need to be familiar with simulation and modelling tools to predict the performance of the BMS under different conditions.