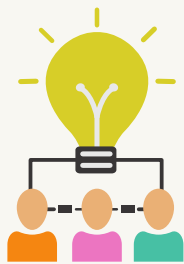




SHIFT LEAD



A battery shift leader is responsible for overseeing the production and operations of a battery manufacturing facility during their shift.



They work with a team of technicians, engineers, and scientists to ensure that the production schedule is met and that the batteries produced meet the required quality standards.



They are responsible for the day-to-day management of the production staff and for ensuring that the equipment is operating efficiently and effectively.